

Cavalier 1978



CABBY

kip
caravans



Cavalier



Caravan Group

Cavalier Caravans,
member of the Cabby
Caravan Group,
producers of quality
caravans for Europe.



Cavalier decor 'T>' range



Cavalier decor 'S' range



Cavalier 390T

EXTERIOR FEATURES

- * Fully galvanized chassis frame
- * Automatic reversing system
- * Heavy embossed aluminium
- * Large gas bottle carrier
- * Full all round insulation, including floor
- * Tinted double acrylic windows
- * Vented double skinned roof lights

Photographed at Framlingham Castle, Suffolk



Cavalier 390T

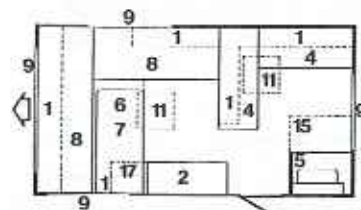
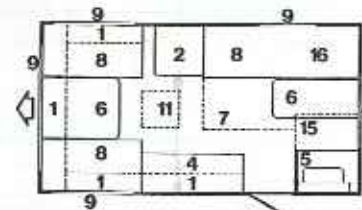
12' 10" - 5 BERTH. CENTRE KITCHEN

This family touring caravan has many features not normally found in a caravan of this type. Large expanding toilet compartment, complete with vanity unit. A Pullman Bunk of novel design completes the sleeping arrangements.

Cavalier 390GT

12' 10" - 2 BERTH. END KITCHEN

With layout that can convert from two singles to a double in minutes, leaving ample floor space. Separate end kitchen, which includes 2 cubic foot refrigerator, full oven and four burners. Manual/electric water pump.



- FLOOR PLAN KEY:**
1. Overhead Lockers
 2. Wardrobe
 4. Kitchen
 5. Toilet Compartment
 6. Table
 7. Bed Extension
 8. Seat/Bed
 9. Opening Window
 11. Roof Light
 15. Toilet Compartment Extension
 16. Pullman Bunk
 17. Night Table

390T

390GT/390GTS

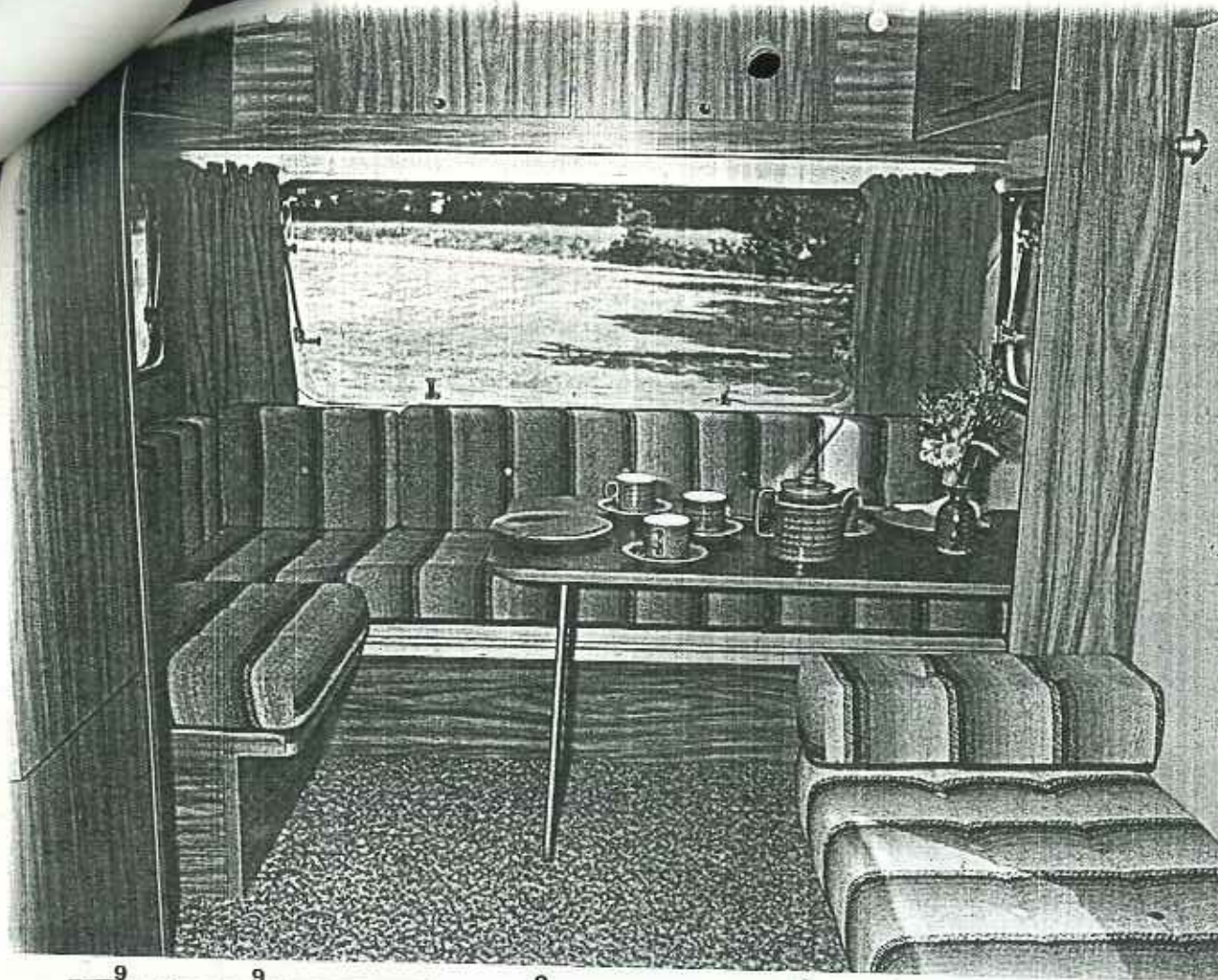


Cavalier 390GTS

12' 10" - 2 BERTH. END KITCHEN

A luxury version of 390GT, additional specification includes, water heater with supply to the vanity unit in the telescopic toilet compartment, reading lights and a 7200 BTU/Hr. floor vented point heater, velour hard wearing upholstery, colour matched curtains with de-luxe inner sheer curtains.





Cavalier 460GT

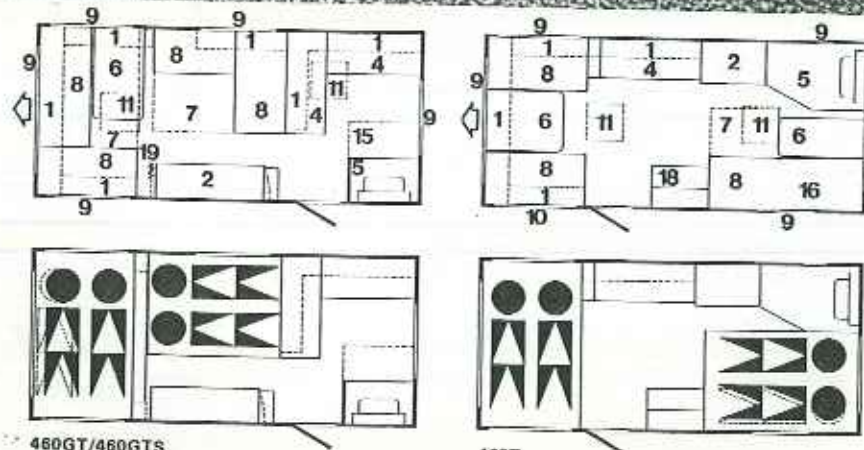
15' 4" - 5 BERTH. END KITCHEN

This ever popular model comes complete with a well equipped separate end kitchen, which includes a large capacity refrigerator and full oven. Ample living space with a two position table, ideal for entertaining.

Cavalier 460T

15' 4" - 5 BERTH. CENTRE KITCHEN

Popular layout with an easy to operate Pullman Bunk. Large toilet compartment with vanity unit, giving ample storage space for all toilet requisites. This is a completely new layout for the 1978 season.

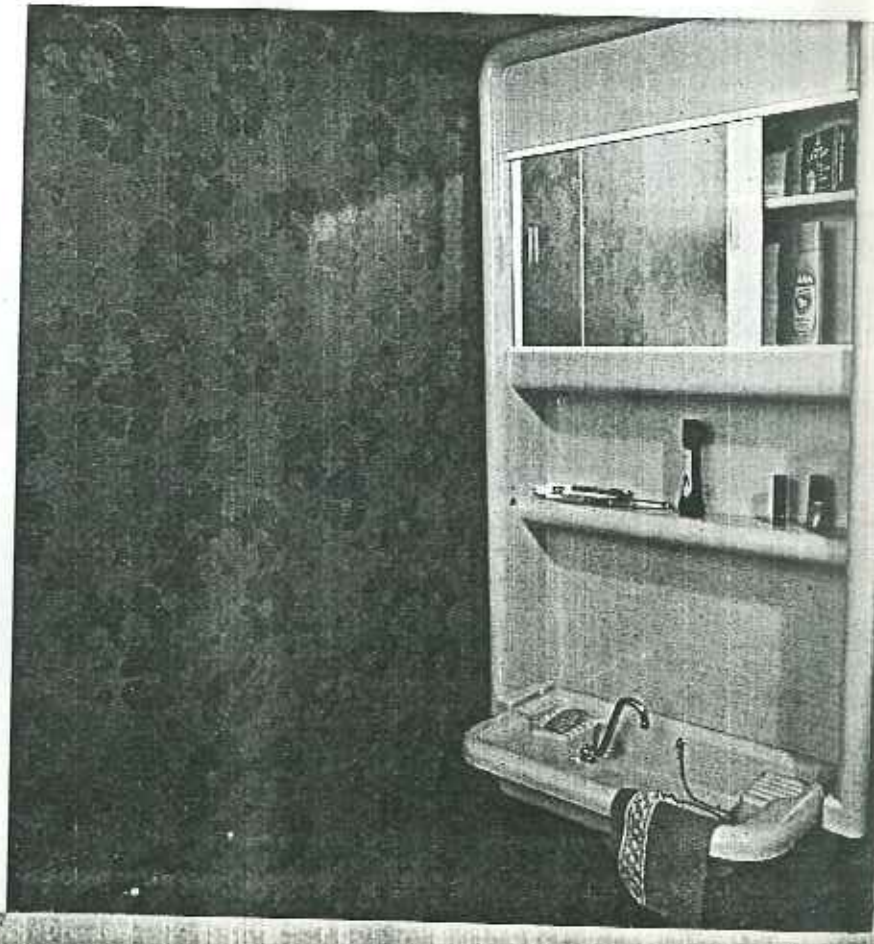


FLOOR PLAN KEY:

1. Overhead Lockers
2. Wardrobe
4. Kitchen
5. Toilet Compartment
6. Table
7. Bed Extension
8. Seat/Bed
9. Opening Window
10. Fixed Window
11. Roof Light
15. Toilet Compartment Extension
16. Pullman Bunk
18. Fridge Storage Cabinet
19. Folding Divider

460GT/460GTS

460T





Cavalier 460GT

EXTERIOR FEATURES

- * Fully galvanized chassis frame
- * Automatic reversing system
- * Heavy embossed aluminium
- * Large gas bottle locker
- * Full all round insulation, including floor
- * Tinted double acrylic windows
- * Vented double skinned roof lights

Photographed at Woodbridge, Suffolk
Rental by Courtesy of Green Ace Motors, Ipswich

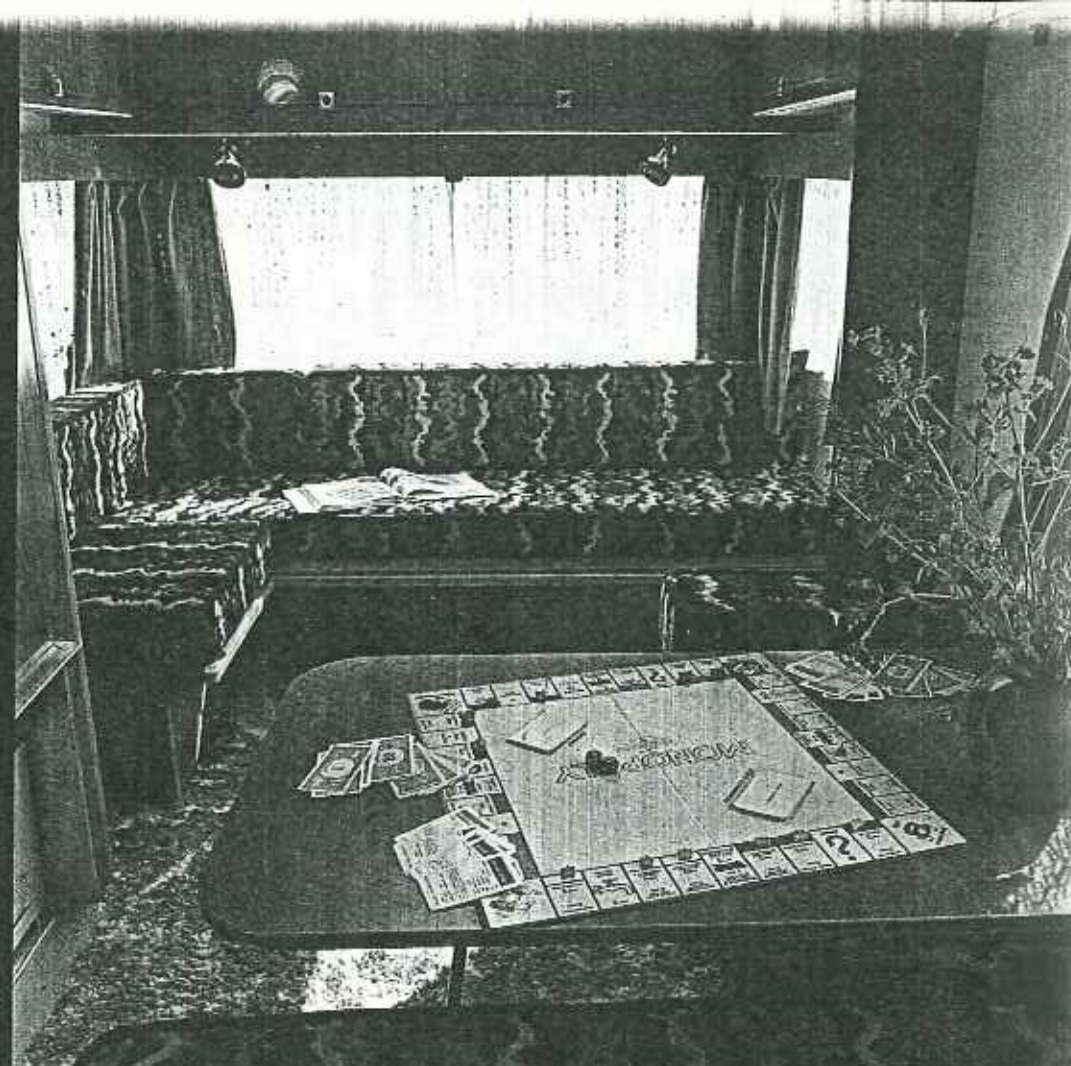


Photographed at Wickham Market, Suffolk

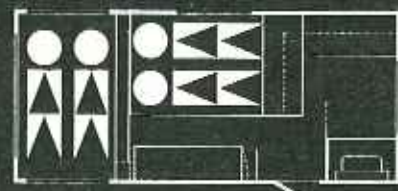
Cavalier 460GTS

15' 4" - 4 BERTH. END KITCHEN

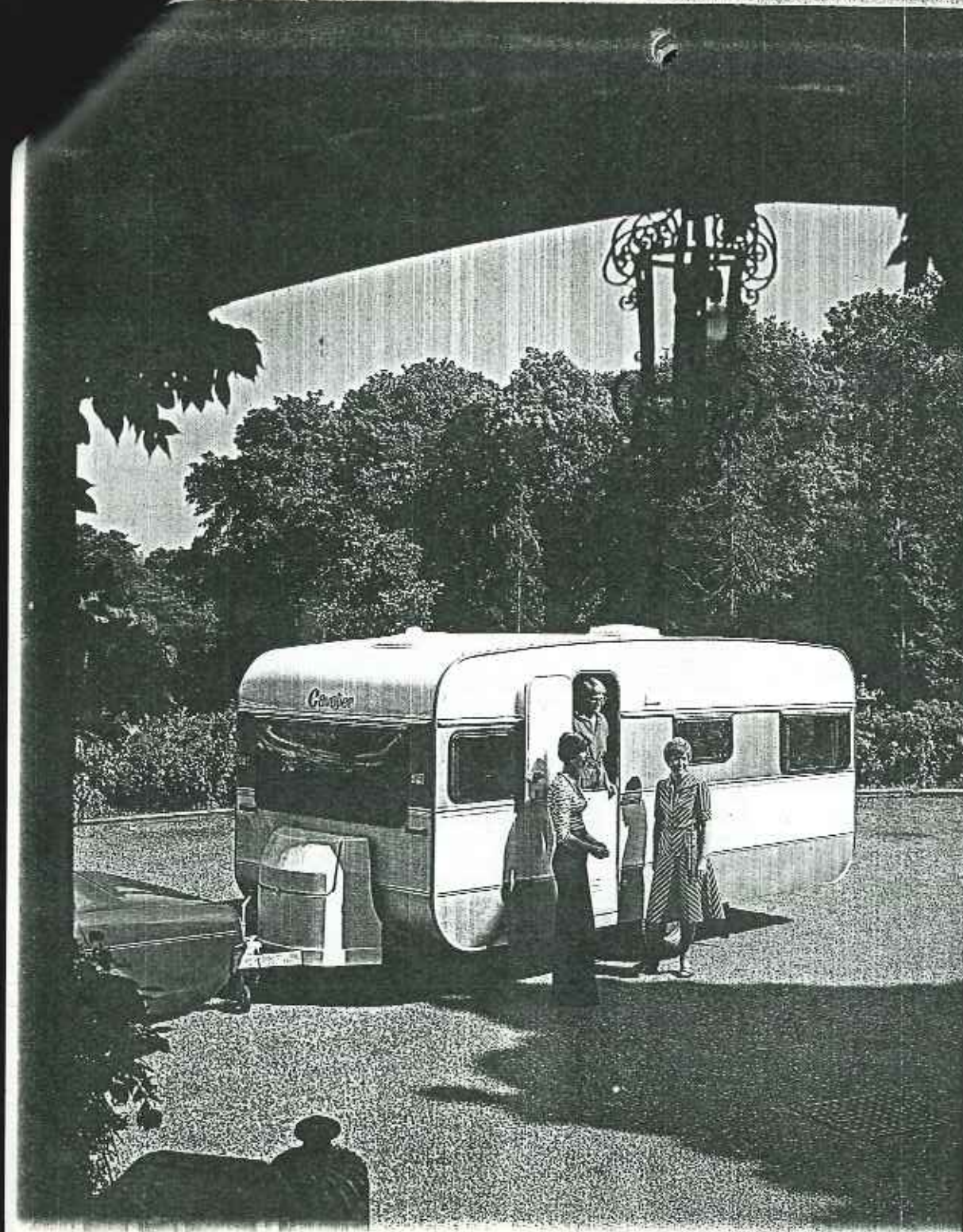
A luxury tourer built to a high specification. Thick all round expanded polystyrene insulation with tinted double glazed windows, double skinned roof lights, built in water reservoir of 7.5 gallons, allows virtual all year round caravanning in comfort, irrespective of outside weather conditions. Internally the emphasis has been placed on comfort with high quality hard wearing upholstery, colour matched to the curtaining and carpet. The separate kitchen area has an easy to clean floor material and rubber entrance mat. Kitchen equipment includes 2 cubic foot refrigerator, extractor hood, full oven and water heater with supply to the vanity unit in the toilet compartment. A 7200 BTU/Hr. vented point heater is a standard fitment.



- FLOOR PLAN KEY:**
- 1. Overhead Lockers
 - 2. Wardrobe
 - 4. Kitchen
 - 5. Toilet Compartment
 - 6. Table
 - 7. Bed Extension
 - 8. Seat/Bed
 - 9. Opening Window
 - 11. Roof Light
 - 15. Toilet Compartment Extension
 - 19. Folding Divider



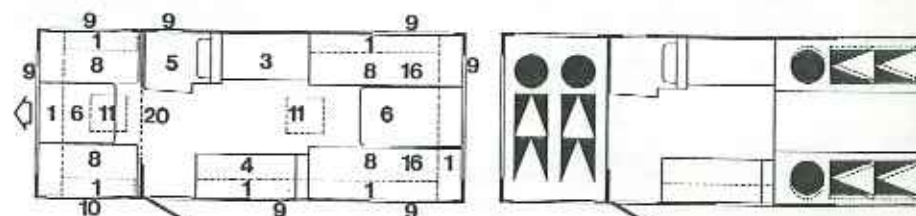
460GTS



Cavalier 520T

17' 1" - 6 BERTH. CENTRE KITCHEN

Full 6 berth comprising of a front double dinette with solid sliding partition and four rear singles. An eye level 2 cubic foot refrigerator, located opposite the centre kitchen area. Large toilet compartment with vanity unit incorporating tip-up wash basin.



FLOOR PLAN KEY:

- | | | |
|----------------------------|-------------------|---------------------|
| 1. Overhead Lockers | 6. Table | 11. Roof Light |
| 3. Wardrobe/Fridge Cabinet | 8. Seat/Bed | 16. Pullman Bunk |
| 4. Kitchen | 9. Opening Window | 20. Sliding Divider |
| 5. Toilet Compartment | 10. Fixed Window | |

Photographed at the Melton Green Hotel, Melton Green, Suffolk



Cavalier 520GTS

EXTERIOR FEATURES

- * Fully galvanized chassis frame
- * Automatic reversing system
- * Full all round insulation, including floor
- * Tinted double acrylic windows
- * Twin axles
- * Awning light
- * Two exterior doors

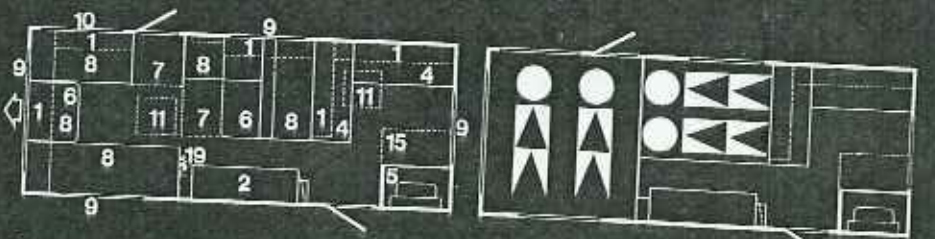
Photographed at Ufford, Suffolk



Cavalier 520GTS

17' 1" - 4 BERTH. END KITCHEN

Designed for high speed continental touring with twin axles for increased stability and braking. The well appointed interior has ample room for entertaining, with the kitchen at the rear in its own area with facilities to cater for the family in comfort.



FLOOR PLAN KEY:
 1. Overhead Lockers
 2. Wardrobe
 4. Kitchen
 5. Toilet Compartment

6. Table
 7. Bed Extension
 8. Seat/Bed
 9. Opening Window

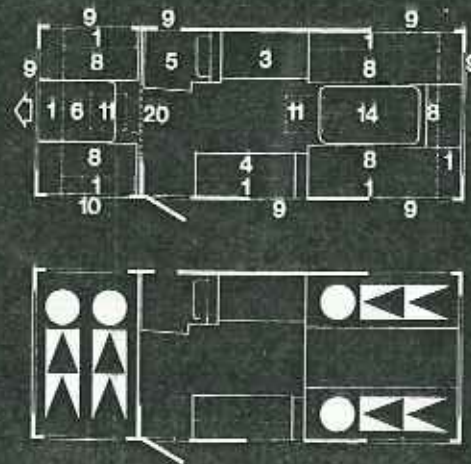
10. Fixed Window
 11. Roof Light
 15. Toilet Compartment Extension
 19. Folding Divider



Cavalier 520TS

17' 1" - 4 BERTH. CENTRE KITCHEN

A popular feature of this luxury caravan is the round sitting group made possible by the use of a free standing table - see photograph opposite. This arrangement allows for entertaining in comfort in elegant surroundings. All the usual specifications of the "S" range are incorporated, together with a separate end dinette which has a solid dividing partition.



FLOOR PLAN KEY:

- | | |
|----------------------------|-------------------------|
| 1. Overhead Lockers | 9. Opening Window |
| 3. Wardrobe/Fridge Cabinet | 10. Fixed Window |
| 4. Kitchen | 11. Roof Light |
| 5. Toilet Compartment | 14. Free Standing Table |
| 6. Table | 20. Sliding Doors |
| 8. Seat/Bed | |





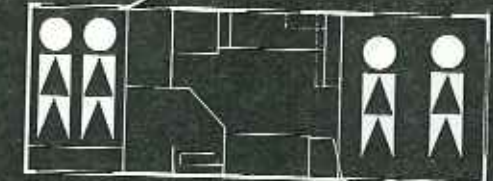
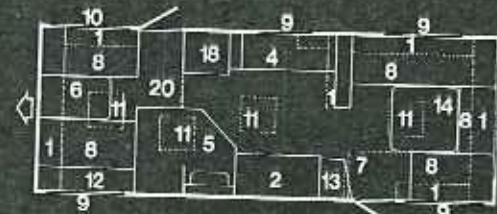
Cavalier 590TS

EXTERIOR FEATURES

- * Fully galvanised chassis frame
- * Automatic reversing system
- * Full all round insulation, including floor
- * Tinted double acrylic windows
- * Twin axles
- * Two exterior doors

Photographed at the Molton Grange Hotel, Woodbridge, Suffolk

...ive caravan for the discerning caravanner. Only a limited number are
 ...ed. All the usual features of the "S" range are included, together with a
 ...pointed toilet compartment which incorporates a specially designed
 ...er unit. Electric lighting is by 12 volt and 220-240 volt mains for
 ...continental use. Care has been taken with the design of the interior layout to
 ...ive the best possible use of all available space. To the front, a separate end
 ...bedroom with a solid sliding partition for full privacy, a front window is not
 ...normally included but is available as an optional extra. An eye level 2 cubic
 ...foot refrigerator alongside the fully equipped kitchen area, which is complete
 ...with a hot and cold water system drawn from an inboard reservoir.
 ...Central heating is via a 20,000 BTU/Hr. gas heater.



Cavalier 590TS

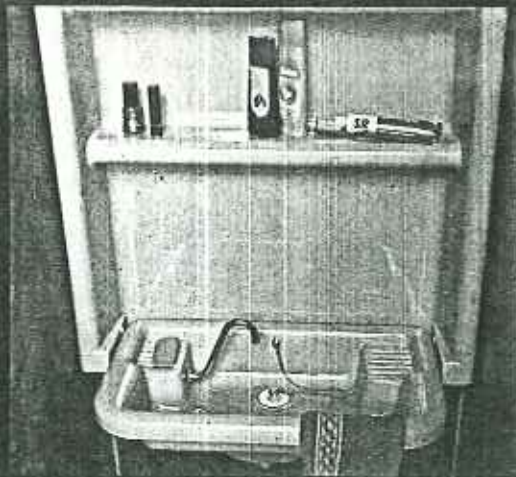
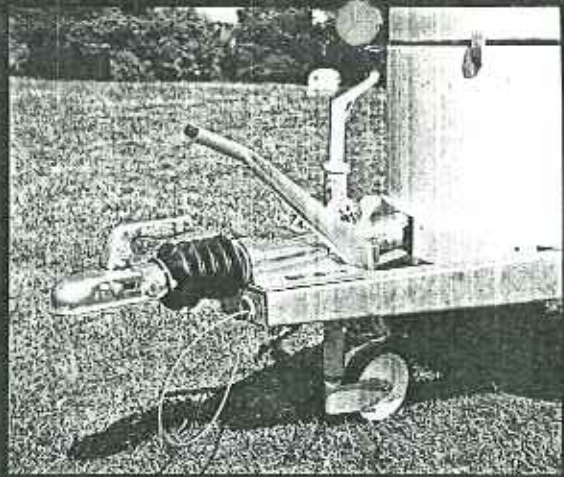
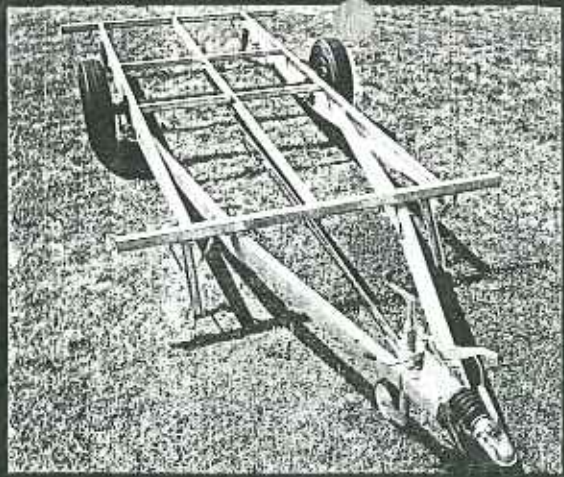
19' 4 3/4" - 4 BERTH. CENTRE KITCHEN

FLOOR PLAN KEY:

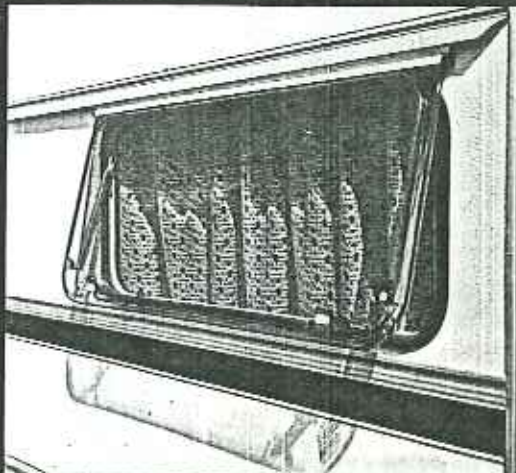
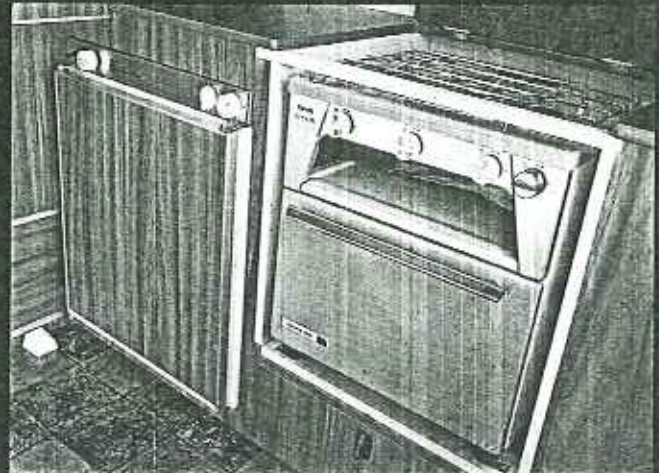
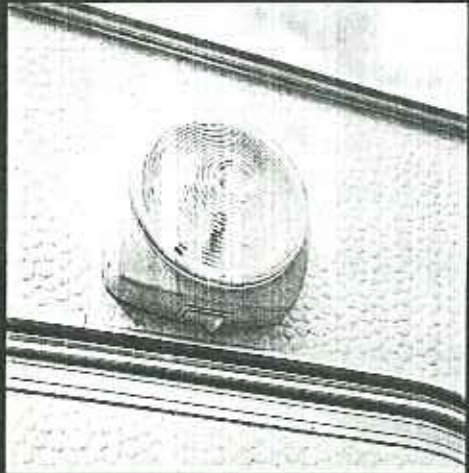
- | | | |
|-----------------------|-------------------|----------------------------|
| 1. Overhead Lockers | 7. Bed Extension | 14. Free Standing Table |
| 2. Wardrobe | 8. Seat/Bed | 18. Fridge Storage Cabinet |
| 4. Kitchen | 9. Opening Window | 20. Sliding Doors |
| 6. Toilet Compartment | 10. Fixed Window | |
| 6. Table | 11. Roof Light | |
| | 12. Storage Box | |
| | 13. TV Shelf | |

atures

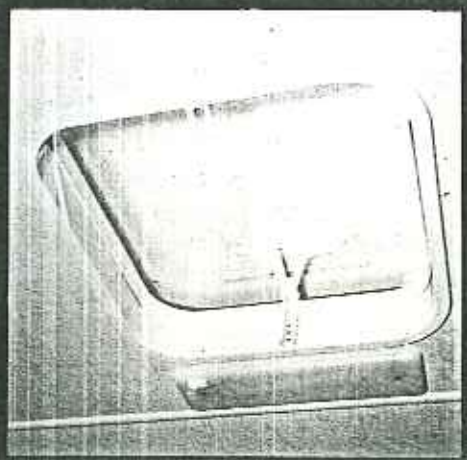
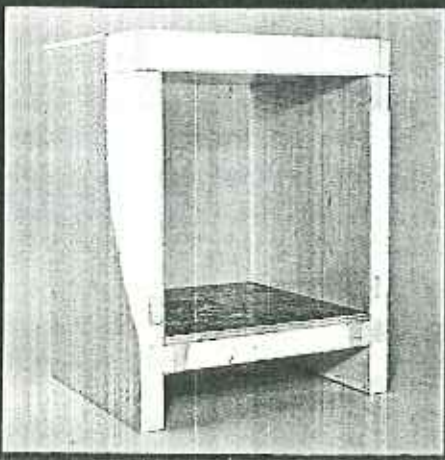
fully galvanised chassis
frame with torsion bar
suspension, a Grau
coupling head with a large
gas bottle locker mounted
on the "A" frame. Vanity
unit fitted to the toilet
compartment. All these
features are standard to the
model range.



On all "S" range models
an awning light is fitted.
This well equipped
kitchen is from the GT
range. Tinted double
acrylic windows standard
on all models. "S" range
window illustrated.



Externally vented point
heater is a standard
feature on all "S" models.
Insulation of expanded
polystyrene common to all
models. Vented double
skinned roof lights again a
standard feature on the
complete model range.



Specifications

	Refrigerator 1 cu. ft. Gas/12 volt	Refrigerator 2 cu. ft. Gas/12 volt	Toilet Compartment	Galvanised Chassis	Point Heater	Wheel Embellishers	Mudflaps	Tinted double glazing	Bottle cover	Pullman Bunk	Tygan Bunk	Water Heater	Reading Lights	Full Oven Cooker	Oven	BODY LENGTH	OVERALL LENGTH	INTERNAL WIDTH	OVERALL WIDTH	OVERALL HEIGHT	EX WORKS WEIGHT	MAXIMUM GROSS WEIGHT
390T	●		●	●			●	●	●	●	●				●	3.91m 12ft 10ins	5.07m 16ft 7 ³ / ₈ ins	1.95m 6ft 4 ³ / ₄ ins	2.08m 6ft 10ins	2.52m 8ft 3 ¹ / ₂ ins	700 kgs 13.75cwt	980 kgs 17.10cwt
390GT		●	●	●		●	●	●			●				●	3.91m 12ft 10ins	5.07m 16ft 7 ³ / ₈ ins	1.95m 6ft 4 ³ / ₄ ins	2.08m 6ft 10ins	2.52m 8ft 3 ¹ / ₂ ins	740 kgs 14.50cwt	980 kgs 17.10cwt
390GTS		●	●	●	●	●	●	●				●	●	●		3.91m 12ft 10ins	5.07m 16ft 7 ³ / ₈ ins	1.95m 6ft 4 ³ / ₄ ins	2.08m 6ft 10ins	2.52m 8ft 3 ¹ / ₂ ins	740 kgs 14.50cwt	980 kgs 17.10cwt
460T	●		●	●			●	●	●	●	●				●	4.67m 15ft 4ins	5.83m 19ft 1 ¹ / ₂ ins	1.95m 6ft 4 ³ / ₄ ins	2.08m 6ft 10ins	2.52m 8ft 3 ¹ / ₂ ins	787 kgs 15.50cwt	993 kgs 19.50cwt
460GT		●	●	●		●	●	●			●				●	4.67m 15ft 4ins	5.83m 19ft 1 ¹ / ₂ ins	1.95m 6ft 4 ³ / ₄ ins	2.08m 6ft 10ins	2.52m 8ft 3 ¹ / ₂ ins	850 kgs 16.75cwt	1005 kgs 19.75cwt
460GTS		●	●	●	●	●	●	●				●	●	●		4.67m 15ft 4ins	5.83m 19ft 1 ¹ / ₂ ins	1.95m 6ft 4 ³ / ₄ ins	2.08m 6ft 10ins	2.52m 8ft 3 ¹ / ₂ ins	890 kgs 17.50cwt	1100 kgs 21.50cwt
520T		●	●	●			●	●	●	●					●	5.21m 17ft 1ins	6.36m 20ft 10 ¹ / ₂ ins	1.95m 6ft 4 ³ / ₄ ins	2.08m 6ft 10ins	2.52m 8ft 3 ¹ / ₂ ins	920 kgs 18.00cwt	1120 kgs 22.00cwt
520TS		●	●	●	●	●	●	●				●	●		●	5.21m 17ft 1ins	6.36m 20ft 10 ¹ / ₂ ins	1.95m 6ft 4 ³ / ₄ ins	2.08m 6ft 10ins	2.52m 8ft 3 ¹ / ₂ ins	990 kgs 19.50cwt	1200 kgs 23.50cwt
520GTS		●	●	●	●	●	●	●				●	●	●		5.21m 17ft 1ins	6.36m 20ft 10 ¹ / ₂ ins	1.95m 6ft 4 ³ / ₄ ins	2.08m 6ft 10ins	2.52m 8ft 2ins	1060 kgs 21.00cwt	1272 kgs 25.00cwt
590TS		●	●	●	●	●	●	●				●	●	●		5.91m 19ft 4 ³ / ₄ ins	7.06m 23ft 2ins	2.13m 7ft 0ins	2.27m 7ft 5 ¹ / ₄ ins	2.52m 8ft 2ins	1230 kgs 24.00cwt	1425 kgs 28.00cwt

● STANDARD

○ OPTIONAL EXTRAS

Technical Data

Chassis: All steel galvanised frame with torsion suspension.

Floor: 43mm thick fully insulated with expanded polystyrene sandwich construction.

Body: Constructed from clear soft wood, half lapped and screwed. Insulation is of expanded polystyrene, fitted into the cavities. Interior walls are of 2.7mm vinyl finished plywood. Exterior cladding is of pre-painted aluminium. Exterior mouldings are of aluminium etched and anodized.

While the information contained in this brochure is correct as at 30th August, 1977, it may be that on account of our continuous programme of improvement or the shortage of supplies, alterations may have to be made to the caravans described in this brochure.

These caravans are sold as holiday touring caravans and the company does not hold itself responsible for any use outside this field. Cavalier Caravans are not intended for all year round residential purposes. All weights are $\pm 3\%$ on standard models.

CAVALIER OWNERS' CLUB

The Cavalier Owners' Club currently has over 450 members from all parts of the country who are actively taking part in, and organising rallies and competitions. These regular events are enjoyed by everyone who takes part.

Contact your Cavalier distributor for full details, or contact Cavalier Caravans who will give details of forthcoming rallies.



Cavalier

Cavalier Caravans,
Walton Avenue,
Felixstowe,
Suffolk IP11 8EZ
Tel: Felixstowe 5633

Dealer